

Maintenance Planning & Scheduling

Course Code - 6240



**SELF PACED
TRAINING**



**LIVE VIRTUAL
TRAINING**



**PUBLIC
TRAINING**

The foundation of achieving cost-effective equipment reliability starts with
Maintenance Planning and Scheduling

ABOUT

ARRELIC TRAINING INSTITUTE

Arrelic Institute is focused to equip both industry professionals and college graduates with the skills and knowledge required for bridging the desire state of workforce which industry needs to compete globally.

Arrelic Institute provides over 75 different type of customized training programs in the field of Reliability Engineering, Asset Management, Best Practice, Operation & Maintenance, Predictive Maintenance, NDT, Predictive Analytics, Quality, Risk & Safety.

Arrelic Institute conducts public trainings and workshops in 38 locations across India and 10+ International locations.

We are working for large corporate house from 15 different types of industries ranging from Airlines, Automobiles, Cement, Defence Manufacturing, FMCG, Glass, Marine, Metals, Mining, Oil & Gas, Power, Pulp & Paper, Facility Management and Fertilizer.

ARRELIC INSTITUTE: AT A GLANCE



ARRELIC

CLIENTS



All the logos and company names are trademarks™ or registered® trademarks of their respective holders. Use of them does not imply any affiliation with or endorsement or sponsored by them. The above logos and trademarks are used for the understanding and easy to recognise the companies from where the past participants came and don't have any intend for any sort of commercial use.

PARTICIPANTS

FROM DIFFERENT COUNTRIES



MPS - BASIC

RUN THIS COURSE IN-HOUSE

Self-paced E-Learning



Live Virtual



In-House



Public



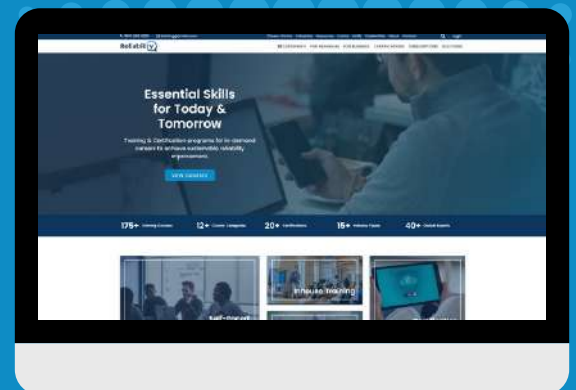
Enjoy this certified training program at your premise of choice, with lower costs, and schedule that suits you best.

- Fully Customized According to your Needs
- 40+ World Class Trainer Flexibility in Choosing Trainer
- Long Term Support & Assessment of Training Effectiveness
- Train As Many Employees as per your Requirement
- Flexible, Cost Effective Minimum 30% Lower Cost
- ISO 27001:2013 Certified Highly Secured LMS Platform
- Learn Whenever, Wherever as per the Participants' Requirement

LMS – DIGITAL PLATFORM

AI Based Virtual E-Learning **LMS** Platform for your Business

Reliability  Platform
From Arrelic



ABOUT TRAINING COURSE

In today's competitive market, companies are under increasing pressure to produce higher quality goods and services at lower production costs. A key component of the overall cost of manufacturing is maintenance and the key role of maintenance is to guarantee the reliability of the production plant. The crucial element for ensuring that maintenance is cost effectively delivered is the planning and scheduling of maintenance tasks. The foundation of excellence and achieving cost-effective equipment reliability starts with Maintenance Planning and Scheduling.

The role of Maintenance Planner has changed dramatically over the last two decades years with the introduction of complex CMMS and ERP systems that promise to make life easier. While the introduction of these new and improved systems has increased our ability to gather and disseminate information, most planners and maintenance managers are starting to understand that their lives have become anything but easier. The quality of the outputs from these systems is reliant on the quality of the inputs and these can only be assured if we have a robust management system to support maintenance, engineering and operations. More and more the maintenance planner is seen as the champion of "The System" but what has been done to improve his or her understanding of the intricacies of asset management in this new technological age?

The answer is often very little. To break the cycle of "garbage in, garbage out" of the CMMS we must develop the personnel in this key role and turn them into asset management planning champions. To do this they must have an understanding of asset management fundamentals and where maintenance fits into the mix.

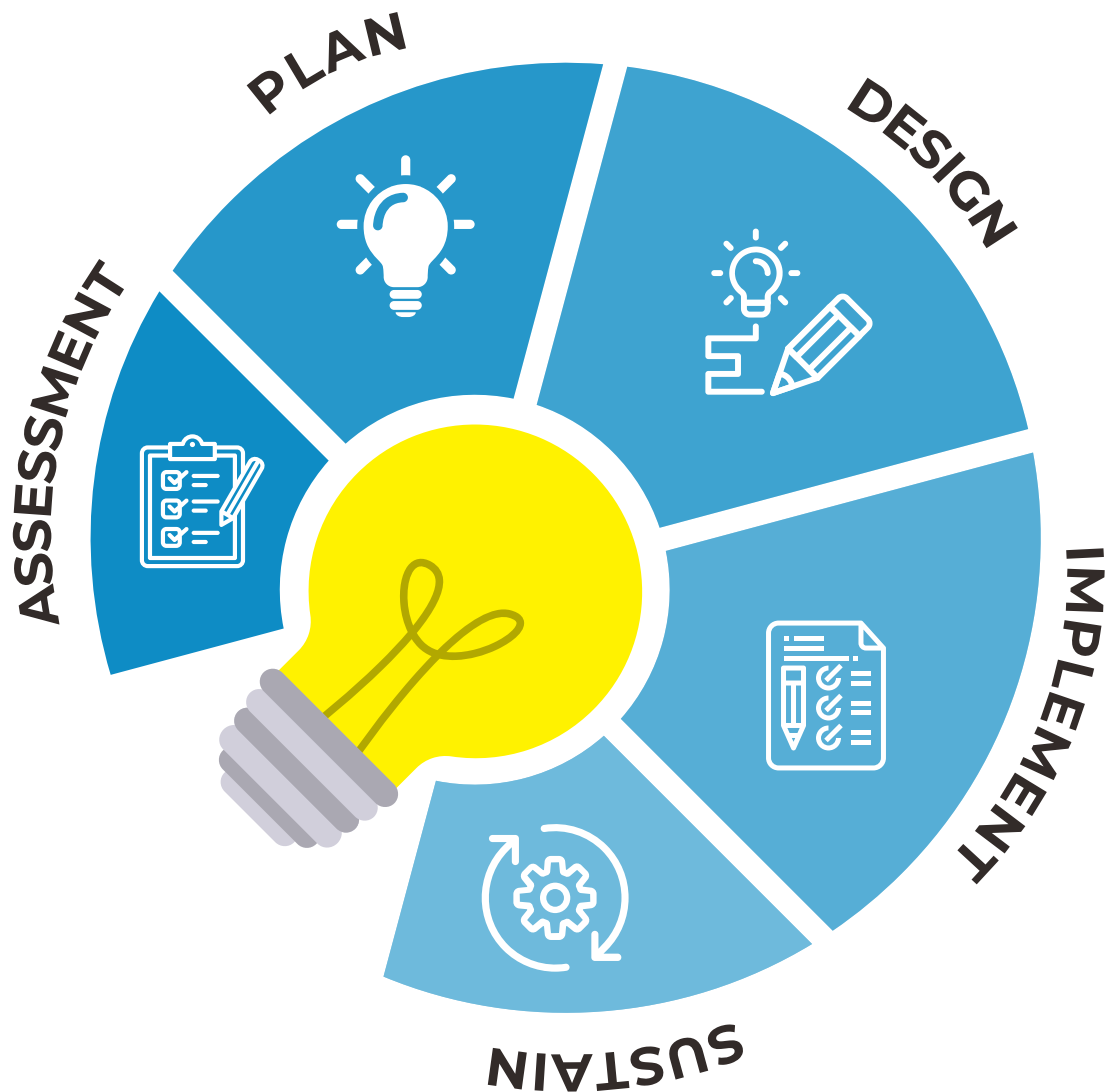
If organisations are to move toward an asset management environment with a focus on maximising equipment life, then the planner must be seen more as a whole of life Asset Management Planner rather than the Maintenance Planner of old. This course is the starting point for that transition.



MPSI

IMPROVING WORK MANAGEMENT SYSTEM

Arrelic MPSI (Maintenance Planning & Scheduling Improvement) Model is a multi-stage methodology that begins with **Assessment** of the current state, Identify the gaps existing procedure, manuals, process, human recourses, required skill to perform the tasks in Maintenance Planning and Scheduling, development of an improvement **Plan**, **Design** the best in class work management frame work, business processes, metrics, leading and Lagging indicators, benching the KPIs with peers, **Implement** the custom designed Work Management Framework in stated time line and **sustain** the system for a longer time.



INDUSTRIES THAT CONCERN ABOUT



LOW PRODUCTIVITY

Conventional use of time-based approach for maintenance does not take into consideration the way assets are being utilized, their current condition and real world operating conditions



HIGH DOWNTIME

Failure to curb unplanned downtime and lack of control over value chain processes lead to high costs, inefficiencies and poor compliance. These severely impacts the profit and industrial growth.



INADEQUATE ASSESS CONTROL

Industries lack the ability to interpret assets data and because of unavailability of proper predictive methods they are unable to predict equipment failures which leads to unplanned downtime.



HIGH MAINTENANCE COST

Increased competition, pressure to grow revenue & profit, tighter regulations, scarcity of raw material, fluctuation demand and obsolete technologies have impacted the way industries are being operated.



WASTAGE OF MATERIAL

Waste is a regrettable but unavoidable element of any process manufacturing production cycle, frequently due to poor planning or recipe or formula changes. To avoid financial losses, prevent high overhead, and improve overall efficiency, a process manufacturer's primary value is to limit the amount of material wasted.



ENVIRONMENTAL CONSCIOUSNESS

Process Manufacturers must be aware of the environmental effect for their ecologically concerned customers by producing green goods. Taking environmental awareness CSR initiative like Forestry Program to gain a positive image into the mindset of customers.

PLANNING & SCHEDULING

WHY CHOOSE THIS COURSE ?

Whether you are new into maintenance planning or you have been doing maintenance planning scheduling for a while, this training / webinar program will give you new knowledge, insights, and skills that are of great value to your maintenance career and income earning potential.

Maintenance planning plays a critical role within the overall physical asset management processes yet, many organizations are still struggling to get it implemented properly and reap the benefits that it brings.

As a result of your participation in this Maintenance Planning training course, you will also identify the responsibilities you will need to embrace in order to establish an effective maintenance planning function.

This training course places the emphasis on the key processes and techniques of maintenance planning that are necessary to sustain the reliability of our assets.

CONTENT

- Planning & Scheduling Role in Asset Management
- Foundations of Maintenance Planning & Scheduling
- Roles & Responsibilities
- A typical work management framework
- Life Cycle Costing
- Identification & Evaluation of Work
- Work prioritization
- Maintenance Planning (What/How)
- Scheduling (Who/When)
- Backlog Management
- Work Execution & Closure
- Shutdowns and Outages
- Recording & Analyzing work history
- Key Performance Indicators
- Common Maintenance Planning & Scheduling Barriers
- Learning and Improving the Planning & Scheduling Process
- Tips to Success in Planning & Scheduling

HIGHLIGHTS OF TRAINING COURSE

- The building blocks of an efficient planning function
- A fast track programmed maintenance development process
- Planning work for quality and efficiency
- Scheduling work in a manner that ensures the continuity of operations
- Gaining the commitment of operations to the maintenance plan and schedule
- Generating performance indicators that pinpoint problems and opportunities
- Eliminating equipment defects through detection, disclosure, planning, scheduling and execution

ARRELIC

08 KEY TAKEAWAY

Able to join free future webinars in Maintenance Planning & Scheduling (MPS)

8



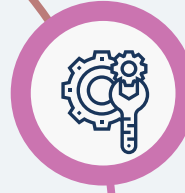
Certifications from Arrellic Professional Development Institute

1



Achieve maximum maintenance effectiveness through proper planning and scheduling activities

2



3

Eliminating equipment defects through detection, disclosure, planning, scheduling and execution



Define the term backlog and its relationship to estimating and Create effective job plans

4



The building blocks of an efficient planning function

5



Differentiate between the planning and scheduling process

6



Use performance metrics, PM compliance, schedule compliance, backlog, efficiency, and labor utilization

7



Able to join free future webinars in Maintenance Planning & Scheduling (MPS)

8



LEARNING OBJECTIVES & KEY BENEFITS

By attending this technical training on “Maintenance Planning and Scheduling” delegates will be able learn and deliver the following things.

- Achieve maximum maintenance effectiveness through proper planning and scheduling activities.
- Become proactive rather than reactive in carrying out maintenance activities.
- Increase equipment Availability, Reliability, safety and plant profitability.
- Differentiate between the planning and scheduling process.
- Apply appropriate prioritization methods based on business risks and needs.
- Implement a Knowledge Management System to address the craft skills shortage.
- Design repeatable procedures to reduce maintenance-induced failures.
- Develop a scheduling process that integrates with Operations.
- Describe and integrate the interdependencies with the Storeroom.
- Analyse and evaluate the effectiveness and efficiencies of the maintenance process.
- Understand common maintenance problems, delays and inefficiencies.
- Use performance metrics, PM compliance, schedule compliance, backlog, efficiency, and labour utilization.
- Define the term backlog and its relationship to estimating.
- Create effective job plans

WHO SHOULD ATTEND ?

Successful maintenance planning and scheduling programs require the disciplined application of proven processes and interdepartmental partnerships. It is important for departments that are influenced and impacted by the processes to understand the processes. People in the following roles should participate in this training:

- Maintenance Planner/Scheduler
- Maintenance Supervisor
- Maintenance Manager
- Maintenance Engineer
- Operation Engineer
- Operation Coordinator
- Production Supervisor
- Storeroom Manager
- Project Engineer
- Purchase Manager



ARRELIC

COURSE OUTLINE



MODULE 01

INTRODUCTION

- ✓ Pre-Assessment
- ✓ Planning & Scheduling role in Asset Management
- ✓ Foundations of Maintenance Planning & Scheduling
- ✓ Roles & Responsibilities

WHAT IS WORK MANAGEMENT?

- ✓ Asset and Maintenance Management
- ✓ The role of maintenance
- ✓ The role of work management
- ✓ A typical work management framework
- ✓ Exercise – Life Cycle Costing

IDENTIFYING WORK

- ✓ Work identification
- ✓ Work screening
- ✓ Work prioritisation

PLANNING WORK

- ✓ Maintenance Planning (What/How)
- ✓ Work packs
- ✓ Why planning is important ?

BEST PRACTICE & MANAGING PERFORMANCE

- ✓ Key Performance Indicators
- ✓ Leading and Lagging Indicators
- ✓ Benchmarking in Maintenance

REVIEW & Q/A



MODULE 02

SCHEDULING WORK

- ✓ Scheduling (Who/When)
- ✓ Standing Work Orders
- ✓ Backlog Management
- ✓ Forward Log Management
- ✓ Materials and resource procurement

EXECUTING WORK

- ✓ Performing work

COMPLETING WORK

- ✓ Recording work history
- ✓ Analysing work history
- ✓ Continuous improvement

BACKLOG MANAGEMENT

- ✓ Backlog Management
- ✓ Forward log management

SHUTDOWNS AND OUTAGES

- ✓ Shutdown
- ✓ Planner & Scheduler roles in shutdown

COURSE REVIEW

- ✓ Common Maintenance Planning & Scheduling Barriers
- ✓ Learning and Improving the Planning & Scheduling Process
- ✓ Tips to Success in Planning & Scheduling

POST ASSESSMENT

ARRELIC

WORLD CLASS TRAINER

HUSSAIN AL-ALI, CAMA, CMRP

QUALIFICATION Graduate in Mechanical Engineering

EXPERIENCE 37+

INDUSTRIES Metal, Oil & Gas, Petrochemicals,
Consulting

BASE LOCATION Manama, Bahrain [Bahraini Citizenship]



Played key roles in overseeing Aluminum Bahrain (ALBA) grow from a capacity of 120,000 MTPA to one of the largest aluminum smelters in the world with a capacity in excess of 900,000 MTPA. A member of the team who implemented the highly acclaimed and successful "EAST" Project at SHARQ Petrochemical Company, in Jubail, KSA, for the implementation of their Asset Management Work Process (AMWP). Implemented the AMWP program at Advanced Petrochemical Company in Jubail, KSA.

Chairman of the Education Committee in GSMR, Bahrain.

DOMAIN KNOWLEDGE

Planning & Scheduling

Maintenance Planning and Scheduling, Asset Management Work Process, Reliability Readiness Assessment, Work Management, Planning and Scheduling Strategy Development

Asset Management

Acquainted with PAS – 55, ISO – 55000 standards, Asset Performance Management Modules, Integrating Asset Performance Management with other Management Initiatives, Asset Management Landscape.

Reliability Engineering

Reliability Centered Maintenance, CBM/PdM Tools- Vibration Analysis, IR – Thermography, Product life Cycle, FMEA, FTA, Reliability Modelling, Reliability Block Diagram, Reliability Prediction, Reliability Testing – ALT, HALT, PRAT, Reliability Growth Analysis, Weibull Analysis, FRACAS, Defect Elimination, Reliability Readiness Assessment, Work Management

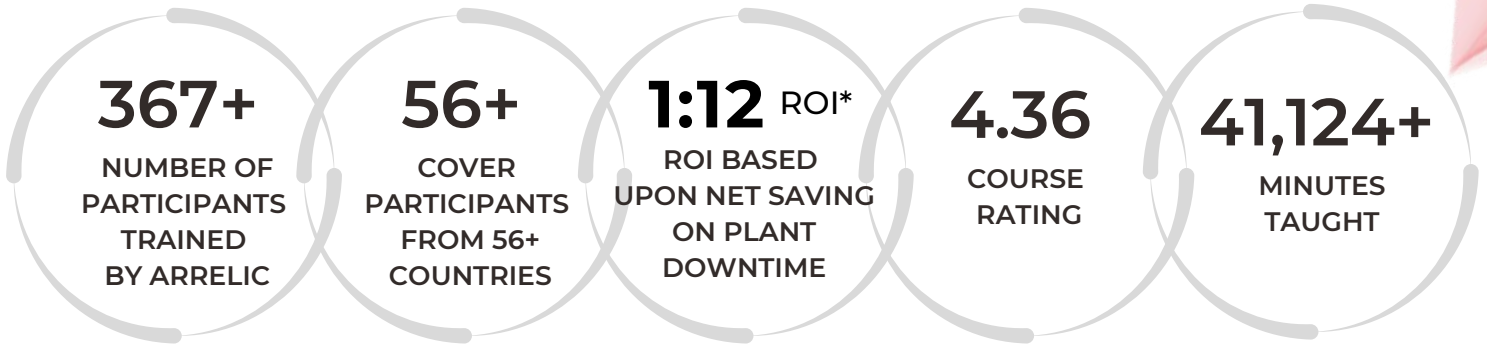
ARRELIC CERTIFICATION

- Maintenance Planning & Scheduling – Basic (Course Code - 6250) certificate with badge verified from ReliabilityQ will be awarded from Arrelic Professional Development Institute (APDI) to those delegates who attend the entire duration of the training course and pass the post assessment test.
- Verify your certificate – reliabilityq.com/verify



Total credit hours will be 08 hours which can be used in full time or distance mode university programs such as PG Diploma in Asset Reliability Management, PG Diploma in Digital Asset Management, PG Diploma in Engineering Management, PG Diploma in Predictive Maintenance, MBA in Reliability Engineering & Asset Management, Plant Maintenance & Diagnostic Engineer (PMDE)

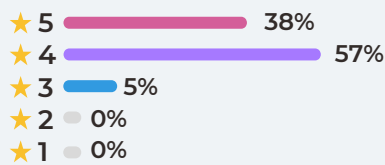
EXPERTISE IN MAINTENANCE PLANNING & SCHEDULING



STUDENT'S FEEDBACK

4.3

★★★★★
Course Rating



Tawanda T.



Easy and familiar maintenance language used.



Kalukay Nzaila G.



this course is very helpful for me and it teaching me so many things in my career and special in the planning work experience.



Jason O.



In-depth learning experience that are relatable to the engineering field of expertise

COURSE PERFORMANCE

Are you learning valuable information?

100%

Are the explanations of concepts clear?

100%

Is the instructor's delivery engaging?

87%

Are there enough opportunities to apply what you are learning?

93%

Is the course delivering on your expectations?

100%

Is the instructor knowledgeable about the topics?

100%

MPS - BASIC

SELF - PACED E-LEARNING

THIS COURSE INCLUDES

- 04+ hours on demand video
- MPS Certificate from Arrelic Professional Development Institute (APDI)
- Verified badge from ReliabilityQ
- Certificate of completion from Udemy
- Full lifetime access
- Access on mobile and TV
- 30-Day Money-Back Guarantee

**USD
99.99**



30-DAY MONEY-BACK GUARANTEE

WAY TO REGISTER

<https://www.udemy.com/course/maintenance-planning-scheduling/?src=sac&kw=maintenance+planning>



COUPON CODE, PRICING, OTHER QUERIES :

COUPON CODE:
076A57283E55EF759DAE

**USD
49.99**

FOR COUPON CODE CONTACT:

<https://wa.me/919937265750>

<https://wa.me/14087094250>

training@arrelic.com

ARRELIC CONTACTS



DEEPAK KUMAR SAHOO

deepak@arrelic.com

training@arrelic.com

+91 – 993 726 5750

+1 – 408 709 4250

306, Webel Tower - II, BN-09, Sector V,
Salt Lake, Kolkata, India - 700091

Toll Free : 1800 890 6250

Mobile : +91 98619 14400



PAYMENT TERMS & INVOICE

Arrelic Institute is a Premium Instructor at Udemy Platform. you need to contact Udemy for your Payment Methods, Invoice, Lifetime Access, certificate, and refund policy.

Arrelic will not responsible for any support regarding payment, Invoice and Udemy Certificate.

Refund & 30-Day Money-Back Guarantee

When you make a payment, you agree to use a valid payment method. If you aren't happy with your content, Udemy offers a 30-day refund or credit for most content purchases.

MPS - BASIC

LIVE VIRTUAL & PUBLIC TRAINING



THIS COURSE INCLUDES

- 08 hours live session with trainers
- Live Q&A Session
- On demand recorded videos lifetime access from mobile & TV
- 1 practice test
- MPS Certificate from Arrelic Professional Development Institute (APDI)
- Verified badge from ReliabilityQ
- Certificate of completion from Udemy

USD
249

INR
14,999

WAY TO REGISTER

<https://tinyurl.com/GForm-MPS6240>

CONTACT:

+91 – 993 726 5750

+1 – 408 709 4250

<https://wa.me/919937265750>

<https://wa.me/14087094250>

training@arrelic.com

FOR LIVE TRAINING SCHEDULE

DATE & TIME FOR THE YEAR 2022-23

NOV 19, 2022 SAT
 DEC 18, 2022 SUN
 JAN 19, 2023 THU
 JAN 22, 2023 SUN
 FEB 18, 2023 SAT
 APR 20, 2023 THU
 MAY 16, 2023 TUE
 JUN 12, 2023 MON
 JUN 24, 2023 SAT

JUL 08, 2023 SAT
 JUL 16, 2023 SUN
 AUG 22, 2023 TUE
 SEP 14, 2023 THU
 OCT 15, 2023 SUN
 NOV 13, 2023 MON
 NOV 18, 2023 SAT
 DEC 11, 2023 MON
 DEC 21, 2023 THU

All classes starts at 10.30 AM | GMT+ 5.30

CANCELLATIONS TERMS

CANCELLATIONS & SUBSTITUTIONS : You must notify over email to Arrelic Training of cancellations at least 2 weeks before a scheduled seminar in order to be eligible for a credit. There is a USD 25/- or INR 1000/- handling charge for all cancellations or rescheduling. We reserve the right to cancel a seminar due to low enrolment. All registrants will be notified in advance and a full refund will be provided upon request.

DISCLAIMER : Circumstances beyond the control of Arrelic may necessitate postponement or substitution of the Instructor. As such, Arrelic reserves the right to implement such amendments.

BANK TRANSFER

Bank Name:	ARRELIC RELIABILITY PRIVATE LIMITED
Account Number:	031 - 040835 - 001
Type:	CURRENT ACCOUNT
Bank:	HSBC
Branch:	31 BBD Bagh, Dalhousie Square, Kolkata, India - 700001
IFSC Code:	HSBC0700004
Bank Code/Swift Code:	HSBCINBB
MICR:	HSBC0700004



COURSE NAME

**MAINTENANCE PLANNING &
SCHEDULING**

TRAINER NAME

HUSAIN AL-ALI, CAMA, CMRP

CREDIT HOURS: 08 Hours

CERTIFICATE ISSUER: ARRELIC
PROFESSIONAL DEVELOPMENT
INSTITUTE

CLIENT IDENTIFICATION DETAILS

(PLEASE COMPLETE FORM IN CAPITAL LETTERS)

NAME: _____

JOB TITLE: _____

EMAIL: _____

MOBILE: _____

ADDRESS: _____

COMPANY/ORGANISATION DETAILS

COMPANY NAME: _____

LOCATION: _____

ADDRESS: _____

INDUSTRY: _____

EMAIL: _____

PHONE: _____

WEBSITE: _____

ACCEPTANCE OF TRAINING CONTRACT & TERMS & CONDITIONS:

I hereby declare I accepted the training contract and terms & conditions.

SIGNATURE: _____

ARRELIC REGISTRATION

TRAINING TERMS & CONDITIONS

1. **PAYMENT TERMS:** Arrelic Reliability Private Limited (hereinafter as "Arrelic") requires 100% payment of the full amount upon receipt of the invoice. Arrelic reserves the right to refuse entry to any client who does not pay the invoice in full and on time. The registration fee does not include travel, hotel accommodation, transfers or insurance.

2. **HOTEL ACCOMMODATION:** Hotel accommodation is not included in the registration fee. A reduced rate or special discounted rates are available to the participants at the hotel hosting the event.

3. **CANCELLATION BY CLIENT:** The client has the right to cancel his/her participation in the event. Cancellation must be received by Arrelic in writing, either by mail or fax. If the client cancels with more than one month's advance notice before the start of the event, Arrelic shall be entitled to retain and charge 50% of the amount payable for participation in the event. If the client cancels with one month's (or less) advance notice, or fails to attend the event, then the client shall not be entitled to any refund. Failure to attend an event shall not excuse a client from owing the full amount of the registration fee. A copy of the training notes from the event will be sent to the client after the event is over in case of cancellation by the client.

4. **CANCELLATION BY ARRELIC:** While every reasonable effort is made to adhere to the advertised program, circumstances can arise which may cause changes in the program, including but not limited to changes in the content, date(s), location or venue, or special features of the planned event. Such circumstances include but are not limited to acts of terrorism, war, extreme weather conditions, compliance with government requests, orders and legal requirements, failure of third party suppliers to timely deliver, and failure to register the minimum target amount of attendees for a given event. Arrelic reserves the right to change the content, date(s), location or venue and/ or special features of an event, to merge the event with another event, or to postpone it or cancel it entirely as appropriate under the circumstances. Client agrees that Arrelic shall not be liable for any cost, damage or expense which may be incurred by client as a consequence of the event being so changed, merged, postponed or cancelled and client agrees to hold Arrelic harmless and to indemnify Arrelic in case of liability caused by any such changes, mergers, postponements or cancellations.

5. **GOVERNING LAW:** This Agreement shall be governed in all respects by the laws of the Indian government. Any disputes arising out of this contract shall be brought before the courts of the India situated in Bhubaneswar, India at its sole discretion.

6. **GST:** GST will be charged at the rate of 18% or at actual based on what is prevailing at the time of Invoice would be extra.

7. **INTELLECTUAL PROPERTY RIGHTS:** Arrelic retains ownership to its intellectual properties such as patents, trademarks, training materials, IT software's etc. Participants should not share the training materials such as presentations, handouts and assessment questionnaires to any one.

ARRELIC

RELATED COURSE

CODE - 6250



MAINTENANCE PLANNING & SCHEDULING (MPS) - ADVANCE

Training Hours: 24 Hours | 03 Days
 Training Level: Sr. Management and Mid Level
 Certification Bodies : Arrelic Professional Development Institute
 Self-Paced E-Learning Mode: USD 199.99
 Live Virtual / Online Mode: USD 499.99

RELIABILITY CENTERED MAINTENANCE (RCM) - OVERVIEW

Training Hours: 16 Hours | 02 Days
 Training Level: Sr. Management and Mid Level
 Certification Bodies : Arrelic Professional Development Institute
 Self-Paced E-Learning Mode: USD 124.99
 Live Virtual / Online Mode: USD 249.99



CODE - 1320

CODE - 1140



RELIABILITY & MAINTENANCE EXCELLENCE (RME)

Training Hours: 32 Hours | 04 Days
 Training Level: Sr. Management and Mid Level
 Certification Bodies : Arrelic Professional Development Institute
 Self-Paced E-Learning Mode: USD 199.99
 Live Virtual / Online Mode: USD 499.99

ADVANCE MAINTENANCE AND RELIABILITY MANAGEMENT (AMRM)

Training Hours: 32 Hours | 04 Days
 Training Level: Sr. Management and Mid Level
 Certification Bodies : Arrelic Professional Development Institute
 Self-Paced E-Learning Mode: USD 149.99
 Live Virtual / Online Mode: USD 399.99



CODE - 1220

CODE - 2400



ASSET PERFORMANCE MANAGEMENT (APM)

Training Hours: 24 Hours | 03 Days
 Training Level: Sr. Management and Mid Level
 Certification Bodies : Arrelic Professional Development Institute
 Self-Paced E-Learning Mode: USD 149.99
 Live Virtual / Online Mode: USD 399.99

INTRODUCTION TO PREDICTIVE MAINTENANCE (PDM/CBM)

Training Hours: 24 Hours | 03 Days
 Training Level: Sr. Management and Mid Level
 Certification Bodies : Arrelic Professional Development Institute
 Self-Paced E-Learning Mode: USD 149.99
 Live Virtual / Online Mode: USD 399.99



CODE - 5005

MPS

CERTIFICANTS

CERTIFICATE NO.	NAME	2020
2062401001	ANANT KULKARNI	
2062401002	ANNA TUKAJ WIŚNIEWSKA	
2062401003	ARUNAVA DAS	
2062401004	KAMLESH KUMAR	
2062401005	SURIYA NARAYANAN	
2062401006	AKASH SHARMA	
2062401007	JITENDRA KUMAR PANIGRAHI	
2062401008	JITHIN DEV	
2062401009	JOYDEEP CHAKRABORTY	
2062401010	KOTESWARA BEEMARASETTI	
2062401011	MOHAMMED SHAZ T P	
2062401012	HASSAN THALIS	
2062401013	PADMANABAN MANI	
2062401014	PANKAJ DESHMUKH	
2062401015	PRADEEP CHOTIA	
2062401016	VAMSIDHAR RAO	
2062401017	KADARKARAI THANGARAJ	
2062401018	SRIDHARRAJ MUTHUPANDIAN	
2062401019	SUNIT MITRA	
2062401020	TANMAYEE MOHANTY	
2062401021	VENKAT RAMAN GOLDAR	
2062401022	SIBAJI PATTANAIK	
2062401023	KANNAIAN SHANMUGAM	

CERTIFICATE NO.	NAME	2021
2162401024	NIKHIL A K	
2162401025	MOHAMMAD AURANGZEB	
2162401026	NAUSHAD CHATHOTH EBRAHIM	
2162401027	JOSEPH SAMUEL AKPAN	
2162401028	THANE HAMILTON	
2162401029	SANDEEP REDDY TETALI	
2162401030	BISWAJEET MOHANTA	
2162401031	CHANDRASEKHAR SAHOO	
2162401032	ANIL SHARMA	
2162401033	VIKRAMSENA REDDY	
2162401034	KALYANA CHAKRAVARTHI	
2162401035	VIJAY KISHORE RACHAKONDA	
2162401036	HARI KRISHNA	
2162401037	DHEERAJ KUMAR SINGH	
2162401038	DEEPU VARGHESE	
2162401039	DANIEL STANCA	
2162401040	TAMUNOIGBENBIA OLUNGWE	
2162401041	NELSON POULOSE	
2162401042	CYRIL CEBEKHULU	
2162401043	SZYMON UCZCIWEK	
2162401044	MAYURESH SHRINIVAS BHARADE	
2162401045	CARL JACOBSEN	
2162401046	SANTANU KUMAR TARASIA	

CERTIFICATE NO.	NAME	2021
2162401047	YASER ABDUL SALAM	
2162401049	VAISAKH SASIDHARAKURUP	
2162401050	PRATEEK KUMAR	
2162401051	STEPHEN GIDEON	
2162401052	CRAIG WILLIAMS	
2162401053	ARKADIUSZ STANISŁAW ŁATA	
2162401054	AMIT SHUKLA	
2162401055	LEONIDAS KONTOKOSTAS	
2162401056	MATHEW HAYES	
2162401057	ABDULLAH ALHARBI	
2162401058	ANSHU KUMAR BHARTI	
2162401059	MUHAMMAD SHAHERYAR WARIS	
2162401060	KONSTANTINOS LOUKAS	
2162401061	AMMAR	
2162401062	KYLE MILLER	
2162401063	RISHI PATEL	
2162401064	HARDI RIFKI AL'AMIN	
2162401065	HERNEY REY VERGARA PARILLO	
2162401066	JUNAID ABDULLA M A	
2162401067	ABDULLAH	
2162401068	SULTAN ALMARBUII	
2162401069	AHMED ISMAIL ALKHOTANI	
2162401070	MOIZ AHMED	
2162401071	STALLION GEORGE PHIRI	
2162401072	GOWTHAM THAMBIDURAI	
2162401073	SOUMYA RANJAN BEHERA	
2162401074	K GOPINATH GANESH BABU	
2162401075	PARISHRAM VARIA	
2162401076	MOHAMED ISHAK BIN OSMAN	
2162401077	MEHMET ARDA YÄLMAZ	
2162401078	DANIELLE STEVENS	
2162401079	BOSCH DAYA	
2162401080	MOHAMMED SHAHZAIB	
2162401081	ALLY JAIBU BAKARI	
2162401082	UYELE EMMANUEL	
2162401083	DANIEL ZOU	
2162401084	THOMAS HAYES	
2162401085	ALI ABUSAAB	
2162401086	JOHN COTIS	
2162401087	RANJITHA PIRATHEEPAN	
2162401088	AMMAR ALBAZ	
2162401089	NTUMBA TSHIMANGA	
2162401090	LULI M PAMBAGYO	
2162401091	SHINTA ULI SORMIN	
2162401092	MANUEL DOMINGOS MATEUS	
2162401093	ABDULLAH ALHARBI	
2162401094	NITIKA	
2162401095	ANTTI KAIHONIEMI	
2162401096	MOHAMED KHALIFA	

MPS

CERTIFICANTS

CERTIFICATE NO.	NAME	2021	CERTIFICATE NO.	NAME	2021
2162401097	KHALID DHA FER AL AHBABI		2162401146	ABDUL KAYYOOM EDRIES	
2162401098	MOISÃ©S GUIMARÃ£ES		2162401147	ARMANDO PEREZ	
2162401099	ARUNSHYAM		2162401148	BRIAN CHOMBA MOFU	
2162401100	RONALD CHERUIYOT		2162401149	JULIE SIMON	
2162401101	EDUAN BURGER		2162401150	GREGORY WANNER	
2162401102	RENDANI NETSHABUMU		2162401151	BALAJI KAMALAKANNAN	
2162401103	ROLAND JOHN ROBERTSON		2162401152	ANDY GAGER	
2162401104	IBRAHIM NAFEA ALSENANI		2162401153	JAIRUS DELA ROSA MARCELO	
2162401105	MOHAMMAD HUSSIN ALI ALYAMI		2162401154	ARUN K	
2162401106	AMAL ALGHADHEEB		2162401155	AHMAD ALI	
2162401107	OKOLLO JOHAN		2162401156	VENKATESAN GANESAN	
2162401108	STEPHEN SAVOLDELLI		2162401157	ISNANTO SUMARTOJO	
2162401109	MD SARFARAZ ALAM		2162401158	ALI ATEF ALI HAMASHA	
2162401110	SAMUEL SITALI		2162401159	MUSTAFA ENES KARAMAN	
2162401111	UDAYA BHASKAR KADALI		2162401160	IBRAHIM KHALIL AH RAM	
2162401112	ABDULRAHMAN ALGHAMDI		2162401161	ZOHIR SABRI	
2162401113	IPSITA HOTA		2162401162	LOURENS LEMMER	
2162401114	IVARR EMPLEO		2162401163	LAHOUSSINE ABAALI	
2162401115	TERI JONES		2162401164	LUCKY IKHAZOBOR	
2162401116	JOE EDELEN		2162401165	ORIME HENRY CHUKWUDI	
2162401117	YOUSIF ALBALAWI		2162401166	ALI ABBAS ALI ALBLOOSHI	
2162401118	MOHAMMED ASIM ALI		2162401167	IVAN DIDULICA	
2162401119	FAWAZ ALGERISY		2162401168	KHALED ABDULRAHMAN ALALI	
2162401120	ELIZABETH SEGEE		2162401169	AHMED AZIZ HAMEED	
2162401121	SUMIT KUMAR CHOUBEY		2162401170	JOHN TEH	
2162401122	ABDULAZIZ ABDULLAH ALMULHIM		2162401171	ULISES	
2162401123	JAMES KWIK		2162401172	SANTANU ROY	
2162401124	MOHAMMED ALSAEDI		2162401173	WALID ZAIDAN SHAABAN	
2162401125	LETHUKUTHULA R. MASONDO		2162401174	JAIME QUINTEROS	
2162401126	IDOWU EMMANUEL OLAMILEKAN		2162401175	ABDUL AZEEM	
2162401127	YASIR MEHMOOD		2162401176	JOSHUA M BRAND	
2162401128	PRANOY JOHN DSOUZA		2162401177	KABELO SEBETLELA	
2162401129	KABELO BAYANI		2162401178	KARIM JUMA DAIFALLAH	
2162401130	MOHAMMED ALAHMADI		2162401179	SAJID MULLA	
2162401131	MILTON VELPANDIAN		2162401180	HARDIK BODAR	
2162401132	ANDREW TOTH		2162401181	PERIYASAMY THANGAVEL	
2162401133	KALYAN KUMAR SAHOO		2162401182	MAAGORZATA POLANOWSKA	
2162401134	JOMAR L. BONHAYAG		2162401183	WESLEY MATOIA	
2162401135	JABULANI SAMBO		2162401184	KANNAN R	
2162401136	LAILA JUMAA AL MAKHMARI		2162401185	KEHINDE NIYI BABATUNDE	
2162401137	DAVID KOPONG MATLOU		2162401186	BABALO DEKEDA	
2162401138	OLATOYE ADEJORO		2162401187	MOHAMAD KHALIFE	
2162401139	ALGHAMDI, NAIF SAEED H		2162401188	KAUSHAL PARIKH	
2162401140	ABDUL BASIT SHEIKH		2162401189	DEEPA NATARAJAN	
2162401141	ALEXANDROS SPANOS		2162401190	NYEKO JOEL	
2162401142	MARK ANTHONY CARO		2162401191	VLATKO GOCEVSKI	
2162401143	ABDULRAHMAN		2162401192	PHEBIAN CHUNGU KALUNGA	
2162401144	KAMALAKANNAN JAYASEELAN		2162401193	SYED MOZAMMIL KARIM	
2162401145	HASSAN ALHAKAM		2162401194	ABDIRAZAK HASSAN NOAH	

MPS

CERTIFICANTS

CERTIFICATE NO.	NAME	2021	CERTIFICATE NO.	NAME	2021
2162401195	SOONTORN JAMPATONG		2162401244	ABDELILAH BALMANE	
2162401196	SURENDER KUMAR SINGH		2162401245	AHMAD RIFQI ANDA	
2162401197	AHMED YOUSSEF		2162401246	RANJEET KUMAR	
2162401198	ASHVIEL ANILESH PRASAD		2162401247	ABDULAZIZ SAIF AL-MAMARI	
2162401199	HANS ANDERSON		2162401248	ARFIANSYAH GALIH S	
2162401200	TOMILOLA JEMILUYI		2162401249	BASKORO ADIPUTRO PURWONO	
2162401201	ANUP SUBODH GALANKAR		2162401250	NAGORO SETYADI	
2162401202	PATRICK M DALTON		2162401300	DAMASCHIN MARIUS IONUT	
2162401203	SUBASH ARYAL		2162401307	AAQIB KABIRI	
2162401204	SAOUD ALSHDAD		2162401309	NDIVHUWO ROBERT NEVHUTANDA	
2162401205	PRATHUSH DULLA		2162401310	RAYMOND NTANDA	
2162401206	LETHIWE NKOMONDE		2162401311	MEHDI YOUSSEF	
2162401207	SONI KARANWAL		2162401312	JACOB MUGENI	
2162401208	ISSA		2162401313	HOSSAMHASSAN52	
2162401209	JACKLINE NYIVA MWOVI		2162401314	ERLANE MORAIS	
2162401210	ASHUTOSH KUMAR		2162401315	PAVAN KUMAR NARNE	
2162401211	ASHUTOSH MAYANK		2162401316	RAMI MADANI ALYANBUAAWY	
2162401212	THOMPSON OLIOMOGBE		2162401317	GIBSON	
2162401213	DEAN GOULDING		2162401318	SAQIB RASHID	
2162401214	RYAN MOHAMMAD ALZHRANI		2162401319	BRANDY CLEM	
2162401215	HOSNY ABDULMAGEED GHALY		2162401320	DETA H. VERSIWIMPI PUTRA	
2162401216	ALBERT MATSIKWA		2162401321	SEBASTIAN V. VAN REENEN	
2162401217	ANDREW HUNT		2162401322	HASSAN HAWSAWI	
2162401218	TRYWELL KABAMBA SIKASIYE		2162401323	GYANESHWAR VERMA	
2162401219	SCOTT WILSON		2162401324	VAIBHAV SWARNKAR	
2162401220	COLLEEN SCHNEIDER		2162401325	MOHAMMED ALQAFTAN	
2162401221	AFAF ADIL AL-SHUHAIBI		2162401326	INSAF FAHIM	
2162401222	HANACHO		2162401327	PHÁ°;M LÃª THÃ;I Ä'Á°;O	
2162401223	SUKMA DHAMAR JATI		2162401328	CEDRIC LUBO	
2162401224	BRIGHT NYARKOH		2162401329	PRITESH PATEL	
2162401225	YOGA ARYATAMA PRIMANTA		2162401330	KEITH SHELDON CHETTY	
2162401226	MURTALA ASHAFA		2162401331	ROY WAWENSA	
2162401227	FRANCIS LOU TUQUERO CO		2162401332	ALAA MAGDY	
2162401228	GIJO GEORGE		2162401333	DAVID KAAMPA	
2162401229	IFEANYI AMAH		2162401334	NAHUM KABEYA	
2162401230	SULIMAN H. ALMEHMADI		2162401335	SALEM ALSAARI	
2162401231	GODSON KOFI AMANFO		2162401336	BOUKAR ABBA	
2162401232	ALLAHSHUKUR SEYIDOV		2162401337	KIM	
2162401233	RAJESH NAIK		2162401338	IFECHUKWUDE NKETA	
2162401234	AKINDELE KABIR OLUSEGUN		2162401339	TROY	
2162401235	TRYWELL KABAMBA SIKASIYE		2162401340	SHEKU KOROMA	
2162401236	ABDULELAH MUBARAK ALKHUTAYFI		2262401001	BRIAN	
2162401237	OSAMA LARI		2262401002	MOHAMMED ALDOSSARY	
2162401238	ABDUL AZIZ		2262401003	PUMOKUMO M. GABICE	
2162401239	MUHAMMAD ADNAN		2262401004	COSTANTINO GALLIA	
2162401240	MOHD ARSHAD		2262401005	MANUEL MACHADO	
2162401241	SYED ABSAR		2262401006	ABINASH MISHRA	
2162401242	HASSAN ALMOHAISON		2262401007	SAMREEN SULTANA	
2162401243	MUHAMMAD SHAHZAD ANWAR		2262401008	JOSE LUCIANO	

MPS

CERTIFICANTS

CERTIFICATE NO.	NAME	2022
2262401009	RYAN DEJITO	
2262401010	K PRAKASH	
2262401011	DEEPAK PRASAD	
2262401012	ACHMAD FARITS FAUZI	
2262401013	ABDULKREEM ALWABSI	
2262401014	AHMED OSSAMA	
2262401015	MTHOKOZISI YENDE	
2262401038	CHARLON PAUL CANILLAS	
2262401039	ZAMA MBOKAZI	
2262401040	SOMB-LA B. MARIE B. KABORĂC	
2262401041	BAHEBOLOM K WOLDETEN	
2262401042	JR MASCARENAS	
2262401043	BILAL MAHMOOD	
2262401044	AREMU ADEGBOYEGA RILIWAN	
2262401046	CHANDRA SHEKHAR SAHU	
2262401048	SUBHANKAR MAHAPATRA	
2262401049	MANAS SUNDAR NAYAK	
2262401052	TIM BEAVER	
2262401053	FIKHIH NUR HIDAYATULLOH	
2262401054	JASON OMUKOKWA	
2262401056	LAZARUS SITHOLE	
2262401057	SAMI ABDULLAH AL KINDI	
2262401058	LI SHAN	
2262401062	BIBI LAFLEUR	
2262401063	THAMER ALOTAIBI	
2262401064	MIGUEL MORA	
2262401065	JOHN BARRETT	
2262401066	AKANIHEONYE CHIGOZIE	
2262401067	TIMOTHY BLAND	
2262401068	NICHOLAS NGWENYA	
2262401069	DIVINE NNAEMEKA ANYANWU	
2262401070	LILIAN OKPALA	
2262401071	ADEDOYIN ABIODUN	
2262401072	KALUKAY NZAILA GATIEN	
2262401073	WAQAS HUSSAIN	
2262401074	HIMANSHU YADAV	
2262401075	EMMA ROSE ALVAREZ	
2262401076	MARIA AMEFIL BALBIN	
2262401077	GLENN ANGELES	
2262401078	JEUEL JABELE P. CODERA	
2262401079	ROJILL DAÑEZ	
2262401080	ARTHUR EINSTEIN FERRER	
2262401081	SAMUEL JACOB ESTACIO	
2262401082	CRAIG WILFRED FREAKE	
2262401083	MUHD HAFIZI	
2262401084	SIBUSISO	
2262401085	THANONGCHAI ROOJING	
2262401086	VIVIENNE MAE A. VIRTUCIO	
2262401087	KASHIF HASSAN	

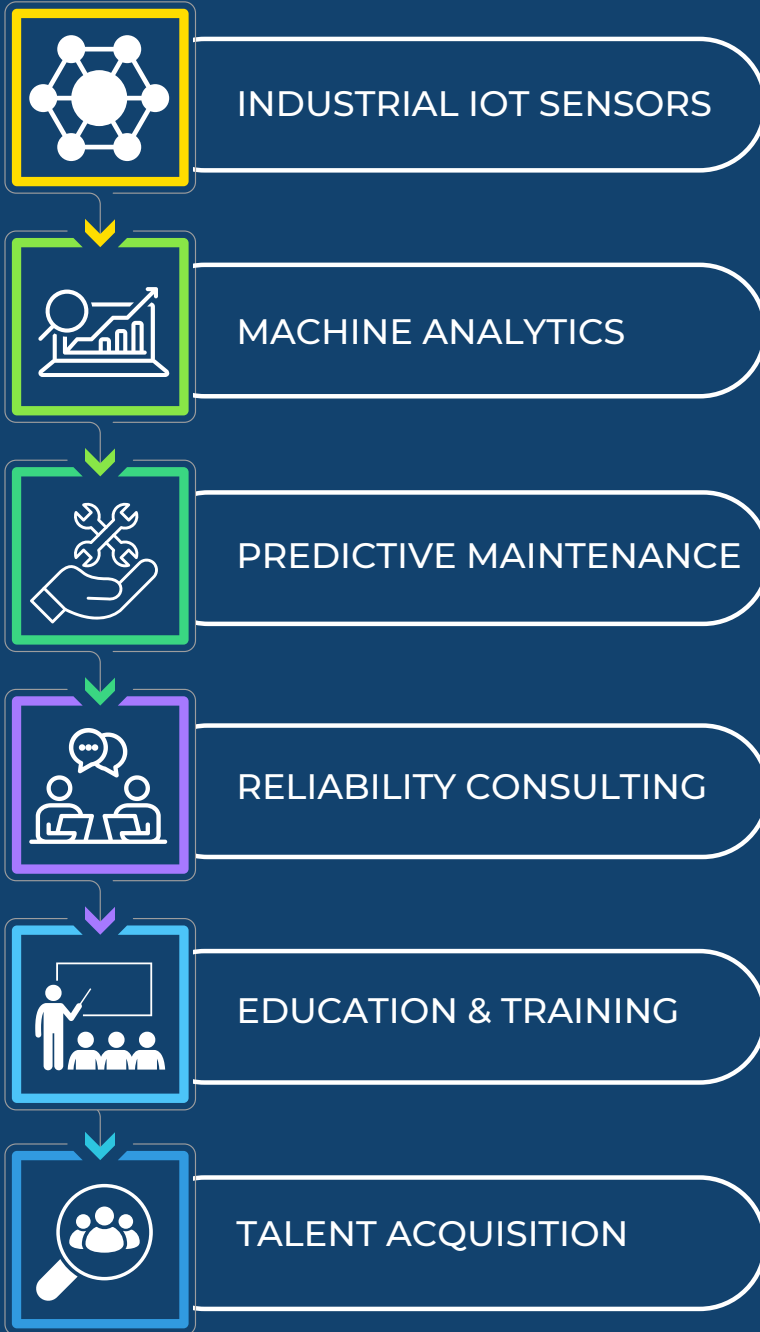
CERTIFICATE NO.	NAME	2022
2262401088	JAMES RYAN DOCTOR	
2262401089	TAWANDA TAMBIRI	
2262401090	YURI TORIBIO	
2262401091	MOHAMMAD ABDULLAH ALANAZI	
2262401092	CARLOS AMAYA	
2262401093	CARL TAYLOR	
2262401094	ABDULRAHMAN ABUKAFTA	
2262401095	ROBERT CERDA	



Verify your certificate -
reliabilityq.com/verify

For MPS Certificate from APDI

For Maintenance Planning and Scheduling (MPS) Certificate from Arrelic Professional Development Institute, kindly send an email to certify@arrelic.com with your Full Name, Email ID, Company you are currently working, Job Title, Country.



arrelic.com
info@arrelic.com / training@arrelic.com
1800 890 6250 / 1800 889 6350
+91 993 726 5750 / +1 408 709 4250
LEI: 984500A013C40F436C26

